

ISI Web of KnowledgeSM

Journal Citation Reports[®]



2009 JCR Science Edition

Journal: ANALES DE PEDIATRIA

Mark	Journal Title	ISSN	Total Cites	Impact Factor	5-Year Impact Factor	Immediacy Index	Citable Items	Cited Half-life	Citing Half-life
	AN PEDIATR	1695-4033	338	0.363	0.403	0.050	140	3.8	5.9
Cited Journal Citing Journal Source Data Journal Self Cites									



Journal Information

Full Journal Title: ANALES DE PEDIATRIA

ISO Abbrev. Title: An. Pediatr.

JCR Abbrev. Title: AN PEDIATR

ISSN: 1695-4033

Issues/Year: 12

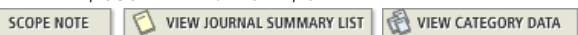
Language: MULTI-LANGUAGE

Journal Country/Territory: SPAIN

Publisher: EDICIONES DOYMA S A

Publisher Address: TRAV DE GRACIA 17-21, 08021 BARCELONA, SPAIN

Subject Categories: PEDIATRICS



EigenfactorTM Metrics
EigenfactorTM Score
0.00113
Article InfluenceTM Score
0.075

Journal Rank in Categories: JOURNAL RANKING

Journal Impact Factor

Cites in 2009 to items published in: 2008 = 43 Number of items published in: 2008 = 165
 2007 = 70 2007 = 146
 Sum: 113 Sum: 311

Calculation: $\frac{\text{Cites to recent items}}{\text{Number of recent items}} = \frac{113}{311} = 0.363$

5-Year Journal Impact Factor

Cites in {2009} to items published in: 2008 = 43 Number of items published in: 2008 = 165
 2007 = 70 2007 = 146
 2006 = 58 2006 = 153
 2005 = 70 2005 = 147
 2004 = 51 2004 = 114
 Sum: 292 Sum: 725

Calculation: $\frac{\text{Cites to recent items}}{\text{Number of recent items}} = \frac{292}{725} = 0.403$

Journal Self Cites

The tables show the contribution of the journal's self cites to its impact factor. This information is also represented in the [cited journal graph](#).

Total Cites	338	Self Cites	79 (23% of 338)
Cites to Years Used in Impact Factor Calculation	113	Self Cites to Years Used in Impact Factor Calculation	32 (28% of 113)
Impact Factor	0.363	Impact Factor without Self Cites	0.260

Journal Immediacy Index

Cites in 2009 to items published in 2009 = 7
 Number of items published in 2009 = 140

Calculation: $\frac{\text{Cites to current items}}{\text{Number of current items}} = \frac{7}{140} = 0.050$

Journal Cited Half-Life

The cited half-life for the journal is the median age of its items cited in the current JCR year. Half of the citations to the journal are to items

published within the cited half-life.

Cited Half-Life: 3.8 years

Breakdown of the citations *to the journal* by the cumulative percent of 2009 cites to items published in the following years:

Cited Year	2009	2008	2007	2006	2005	2004	2003	2002	2001	2000	1999-all
# Cites from 2009	7	43	70	58	70	51	38	1	0	0	0
Cumulative %	2.07	14.79	35.50	52.66	73.37	88.46	99.70	100.00	100.00	100.00	100

Cited Half-Life Calculations:

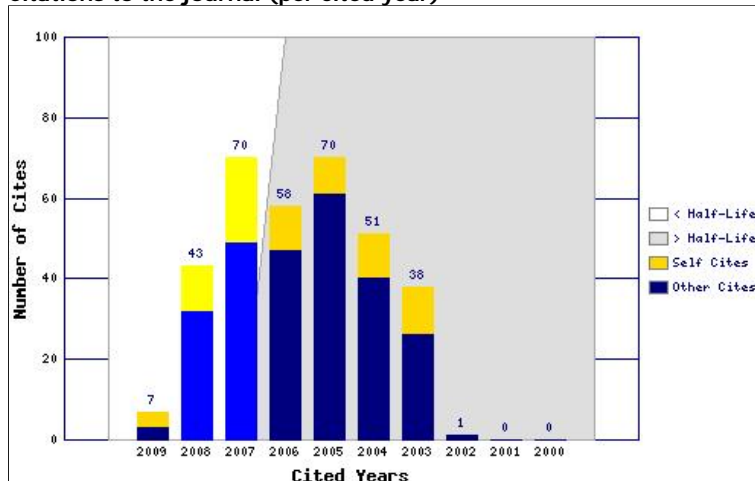
The cited half-life calculation finds the number of publication years from the current JCR year that account for 50% of citations received by the journal. Read help for more information on the calculation.

Cited Journal Graph

[Click here for Cited Journal data table](#)

This graph shows the distribution by cited year of citations to items published in the journal AN PEDIATR.

Citations to the journal (per cited year)



- The white/grey division indicates the cited half-life (if < 10.0). Half of the journal's cited items were published more recently than the cited half-life.
- The top (gold) portion of each column indicates Journal Self Citations: citations to items in the journal from items in the same journal.
- The bottom (blue) portion of each column indicates Non-Self Citations: citations to the journal from items in other journals.
- The two lighter columns indicate citations used to calculate the Impact Factor (always the 2nd and 3rd columns).

Journal Citing Half-Life

The citing half-life for the journal is the median age of the items the journal cited in the current JCR year. Half of the citations in the journal are to items published within the citing half-life.

Citing Half-Life: 5.9 years

Breakdown of the citations *from the journal* by the cumulative percent of 2009 cites to items published in the following years:

Cited Year	2009	2008	2007	2006	2005	2004	2003	2002	2001	2000	1999-all
# Cites from 2009	95	476	551	480	483	453	360	315	257	248	1299
Cumulative %	1.89	11.38	22.36	31.93	41.56	50.59	57.76	64.04	69.16	74.11	100

Citing Half-Life Calculations:

The citing half-life calculation finds the number of publication years from the current JCR year that account for 50% of citations in the journal. Read help for more information on the calculation.

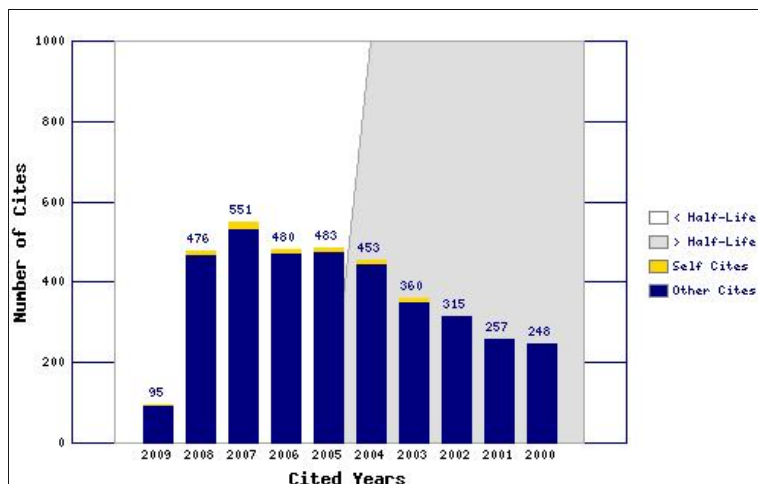
Citing Journal Graph

[Click here for Citing Journal data table](#)

This graph shows the distribution by cited year of citations from current-year items in the journal AN PEDIATR.

Citations from the journal (per cited year)

- The white/grey division indicates the citing half-life (if < 10.0). Half of the citations from the journal's current items are to items published more recently than the citing half-life.
- The top (gold) portion of each column indicates Journal Self Citations: citations from items in the journal to items in the same journal.
- The bottom (blue) portion of each column indicates Non-Self Citations: citations from the journal to items in other journals.



Journal Source Data ▲

	Citable items			Other items
	Articles	Reviews	Combined	
Number in JCR year 2009 (A)	138	2	140	139
Number of references (B)	3485	282	3767	1250.00
Ratio (B/A)	25.3	141.0	26.9	9.0

[Acceptable Use Policy](#)
 Copyright © 2010 Thomson Reuters.



ISI Web of KnowledgeSM

Journal Citation Reports[®]

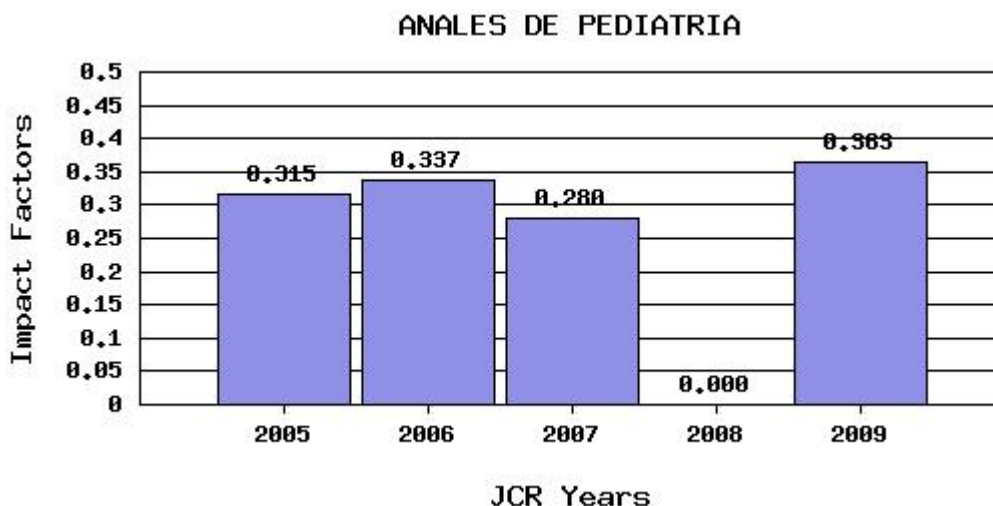


2009 JCR Science Edition



Impact Factor Trend Graph: ANALES DE PEDIATRIA

Click on the "Return to Journal" button to view the full journal information.



**Impact Factor -- see below for calculations*

The journal impact factor is a measure of the frequency with which the "average article" in a journal has been cited in a particular year. The impact factor will help you evaluate a journal's relative importance, especially when you compare it to others in the same field. For more bibliometric data and information on this and other journal titles click on the "Return to Journal" button.

NOTE: Title changes and coverage changes may result in no impact factor for one or more years in the above graph.

2009 Impact Factor

Cites in 2009 to articles published in:	2008 = 43	Number of articles published in:	2008 = 165
	2007 = 70		2007 = 146
	Sum: 113		Sum: 311
Calculation: Cites to recent articles	113	=	0.363
Number of recent articles	311		

[Acceptable Use Policy](#)
Copyright © 2010 Thomson Reuters.

